



Since 1957

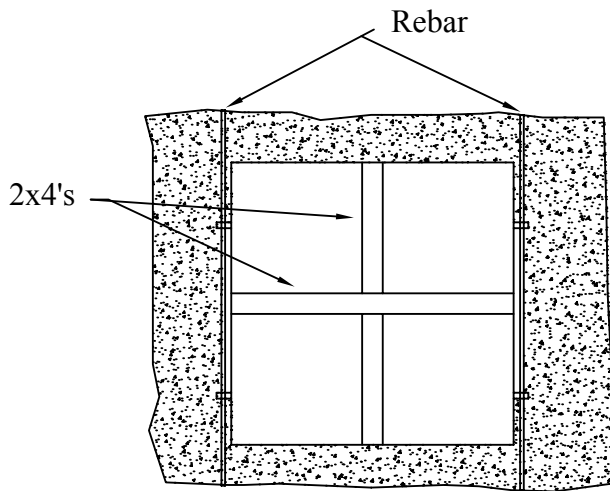
H-M Company
LINT INTERCEPTOR
www.draintroughs.com

2305 Gilbert Avenue
Cincinnati, Ohio 45206
Telephone: (513) 281-3832
Telephone: (800) 365-1900
Fax: (513) 281-0572

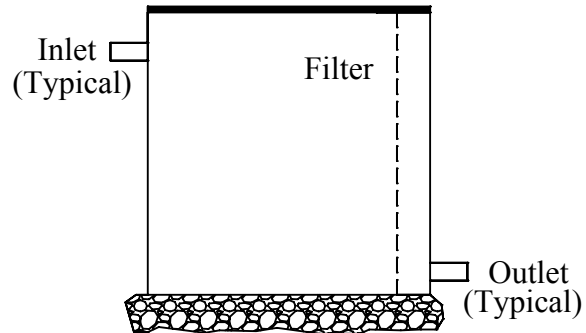
Installation/Operation Instructions

In Ground Installation

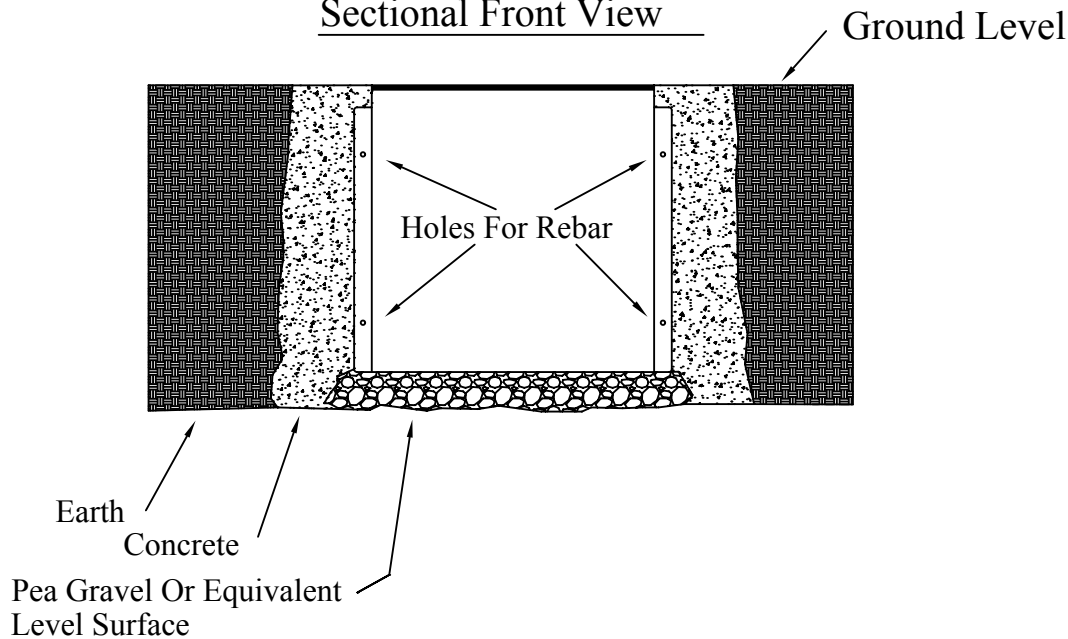
Plan View



Sectional Side View



Sectional Front View



- | |
|---|
| Rebar is Necessary To Prevent The Unit From Floating Out Of The Ground |
| Insert 2x4's Inside Unit For Structural Bracing. Secure Lids On Unit Prior To Concrete Pour |
| Remove 2x4's Once The Concrete Has Cured |
| Rebar is Required for units that are larger than 2'l x 2'w x 2'h. |
| Use Hole Saw To Cut Hole For Fitting Kits Provided |
| Place Gasket On Inside And Outside Of Unit |
| Screw Fitting Kit Together Compressing Gaskets To The Unit. No Adhesive Required |
| Glue PVC Pipes Into Fitting Kits |
| Lint Filter Must Be Cleaned On A Weekly Basis |
| Lid(s) Must Be Screwed To The Unit At All Times Except When Cleaning The Filter |