



Since 1957

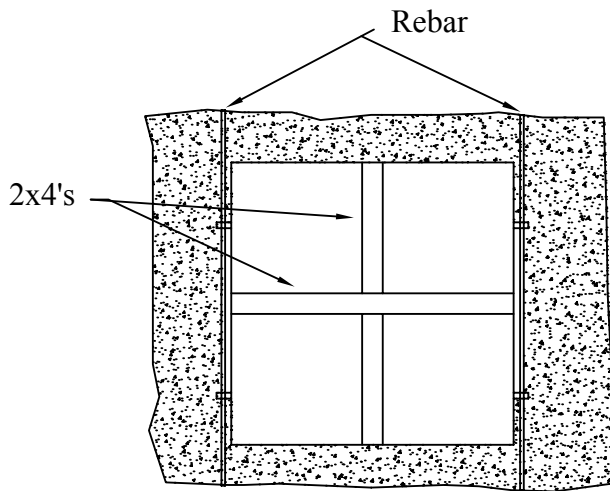
H-M Company
LINT INTERCEPTOR
www.draintroughs.com

2305 Gilbert Avenue
Cincinnati, Ohio 45206
Telephone: (513) 281-3832
Telephone: (800) 365-1900
Fax: (513) 281-0572

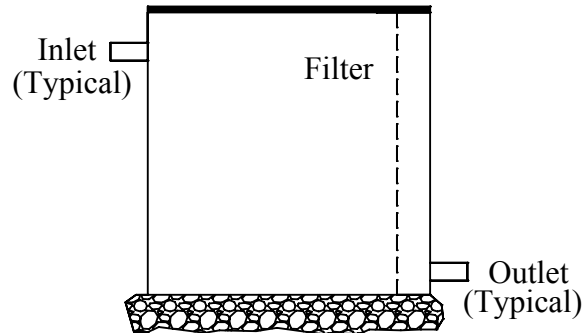
Installation/Operation Instructions

In Ground Installation

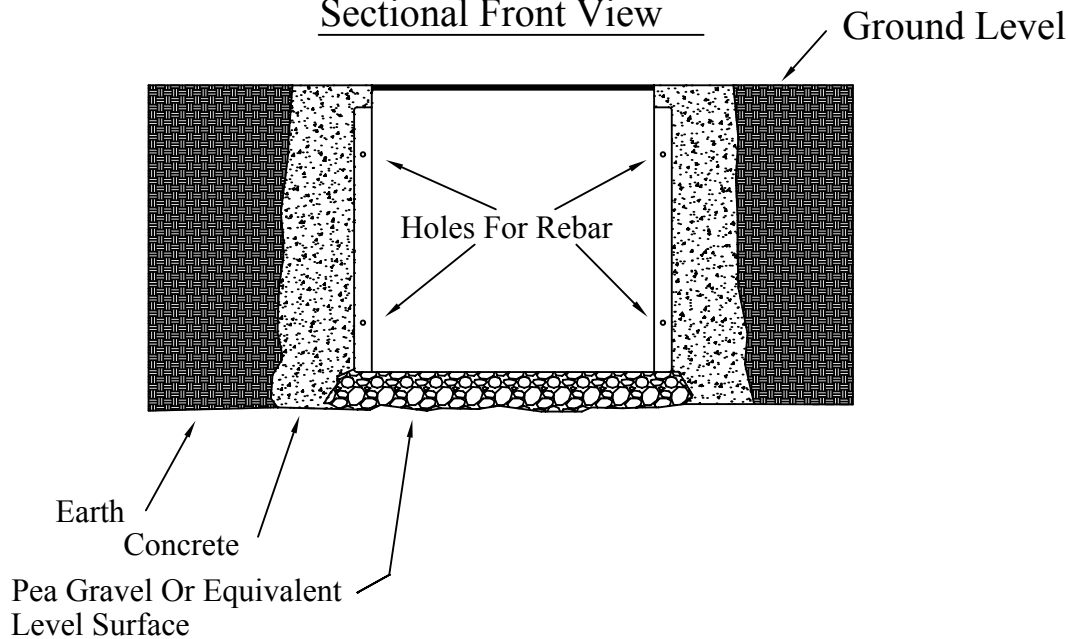
Plan View



Sectional Side View



Sectional Front View



Rebar is Necessary To Prevent The Unit From Floating Out Of The Ground

Insert 2x4's Inside Unit For Structural Bracing. Secure Lids On Unit Prior To Concrete Pour

Remove 2x4's Once The Concrete Has Cured

Rebar is Required for units that are larger than 2'l x 2'w x 2'h.

Use Hole Saw To Cut Hole For Fitting Kits Provided

Place Gasket On Inside And Outside Of Unit

Screw Fitting Kit Together Compressing Gaskets To The Unit. No Adhesive Required

Glue PVC Pipes Into Fitting Kits

Lint Filter Must Be Cleaned On A Weekly Basis

Lid(s) Must Be Screwed To The Unit At All Times Except When Cleaning The Filter